

SURFACE ANALYSIS

SURFACE ANALYSIS

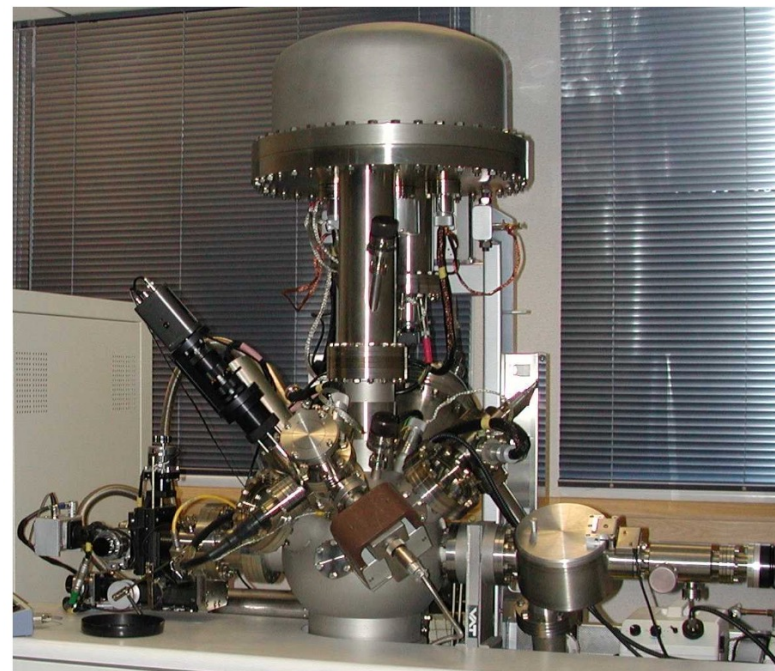
MSE-351

Anna Igual Munoz

Igor Stolichnov

PART I: BEAM TECHNIQUES

PART II: LOCAL PROBE TECHNIQUES



TEACHERS

Igor Stolichnov

Anna Igual Munoz

Surface analysis: Planning

- Course organization and evaluation:
 - Part I (4 lectures, in-class exercises)
 - Part II (4 lectures, in-class exercises)

 - Weeks 9-13 TPs in labs (individual projects in small groups)
 - **Week 14: TP presentation and evaluation (16.12.2025)**

Final evaluation grade: 1/3 (part I) + 1/3 (part II) + 1/3 (TP)